

Moving ABELDent SQL to a new Server

LOG IN AS "ADMINISTRATOR" FOR TASKS BELOW, NOT AN ACCOUNT WITH ADMIN PRIVILEGES

- 1) From **OLD SERVER** Run "**SQL Server Maintenance Plan**". (Desktop/ABELDent Administration) Which will create **.bak** (latest backup) from SQL database. Store somewhere on **NEW SERVER**
- 2) Install **SQL** on the "**New Server**" (Refer to "**Installing SQL Server Manually.PDF**")
- 3) Install **ABELDent DCS**, it installs a blank **ABEL** in the SQL Database. (NO Data present)
- 4) From **OLD SERVER**: Copy over the **ABELDent** folder on to **NEW SERVER**.
- 5) Restore Databases in SQL server from the latest **.bak** files which should be created in **STEP 1**.

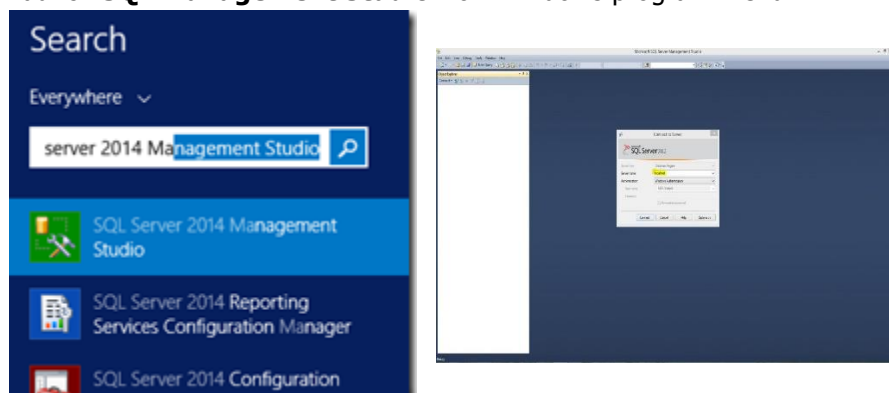
NOTE: Follow the steps below to restore the SQL database from **.bak** files

Current ABELDent revisions use a single database called **ABEL**.

Earlier versions will have **6** Databases, in that case **restore all 6 stated below**.

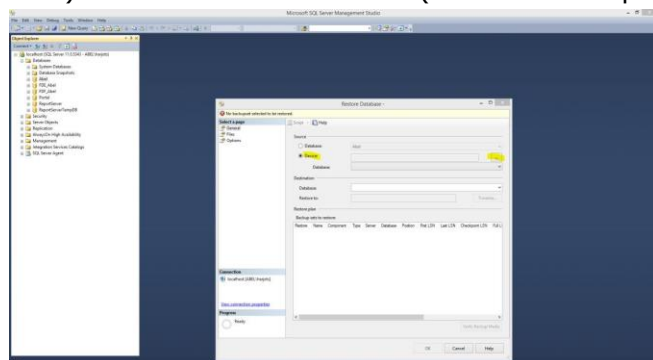
-Abel, Abelsecurity, Chart, Clinical, ClinicalForms, Portal

- i) Launch **SQL Management Studio** from windows program menu.



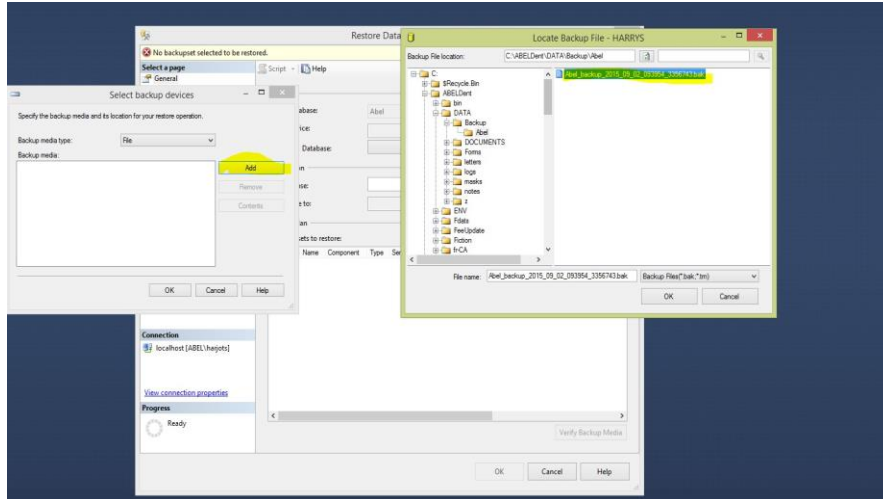
- ii) Expand databases and right click on the 'Abel' database -> Click on Tasks -> Restore -> Database

- iii) Click on Device and ... (three dots or ellipsis) on the right

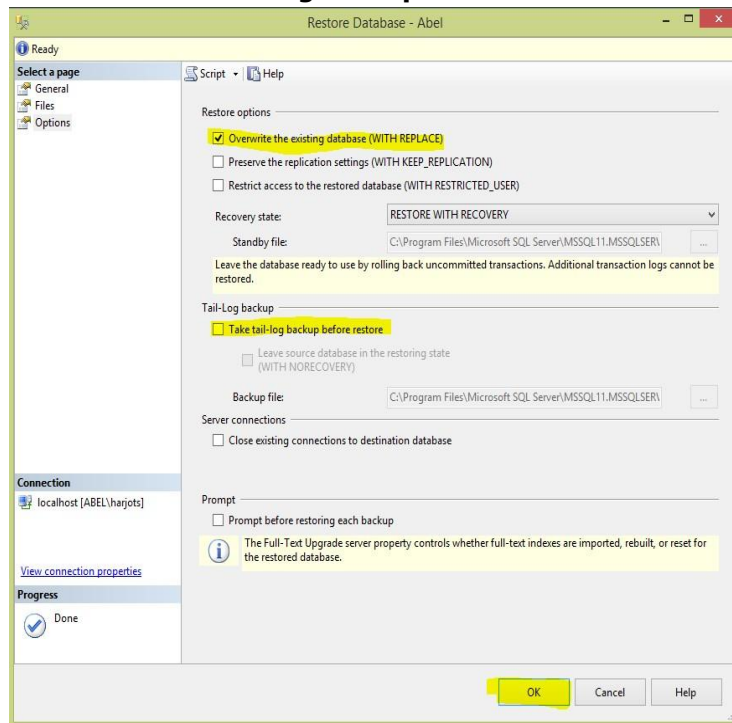


Moving ABELDent SQL to a new Server

- iv) Click on Add and navigate to your recent database backup in Abeldent\Data\Backup\Abel



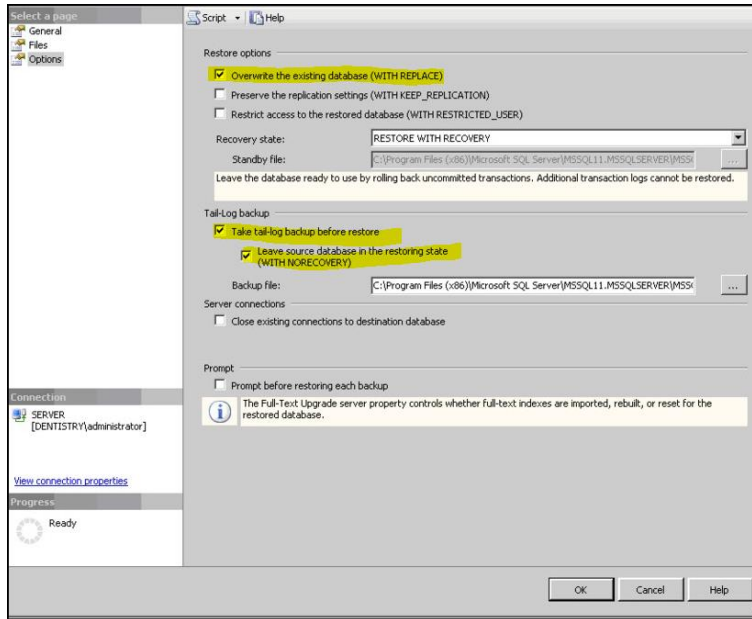
- v) Click on Options and Check the box for '**Overwrite the Existing Database**' and uncheck the '**Take tail-log backup before restore**'. Click on ok



Moving ABELDent SQL to a new Server

VI) If you need to restore **Transaction Logs** then follow these steps.

Expand databases; right click on the 'Abel' database -> Click on Tasks -> Restore -> Transaction Log



- 6) Open the **ABELDent** program to validate the Data looks correct
- 7) Setup **Maintenance Plans** follow "**Creating Maintenance Plans in SQL SERVER**"
- 8) Reinstall client machines select client **radio button** and indicating new **SERVER NAME**.
- 9) If office uses **Itrans** reinstall using "**How to Install Itrans**"
Once installed - Contact Itrans and install a new **Digital Certificates**, then reboot the server.
- 10) Call ABELDent support to **re-license** SERVER permanent license @ **1-800-263-5104** ext. **2**

IF SQL HAS ISSUES with AUTOINSTALL and says "**SQL is already installed**", do not delete anything.
Just follow "**Installing SQL Server Manually**" document.